

**B.Sc. I st year
Zoology Practical exam
Date: 07/07/2021**

DURATION 3:00 HRS

MAXIMUM MARKS : 50

TIME- 11:00am TO 2:00pm

MINIMUM MARKS: 17

| | |
|--|-----------|
| 1. Major dissection (Alternative methods: By Clay Model) | 10 |
| 2. Minor dissection (Alternative methods: By Clay Model) | 05 |
| 3. Adaptive characters of animals | 04 |
| 4. Cytological preparation | 05 |
| 5. Spotting | 16 |
| 6. sessional | 10 |

•
1. Major dissection (Alternative methods: By Clay Model)

Nervous system of Prawn

2. Minor dissection (Alternative methods: By Clay Model)

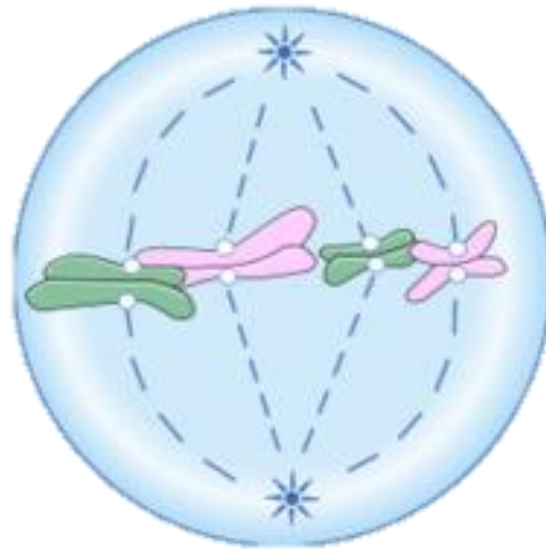
Cardiac stomach of prawn

3. Adaptive character of Animal

write any 8 characters



4. Cytological preparation: Squash preparation from onion root tip
Identify the stage and write five comments on it



5. Spotting

Spot no-1



Spot no-2



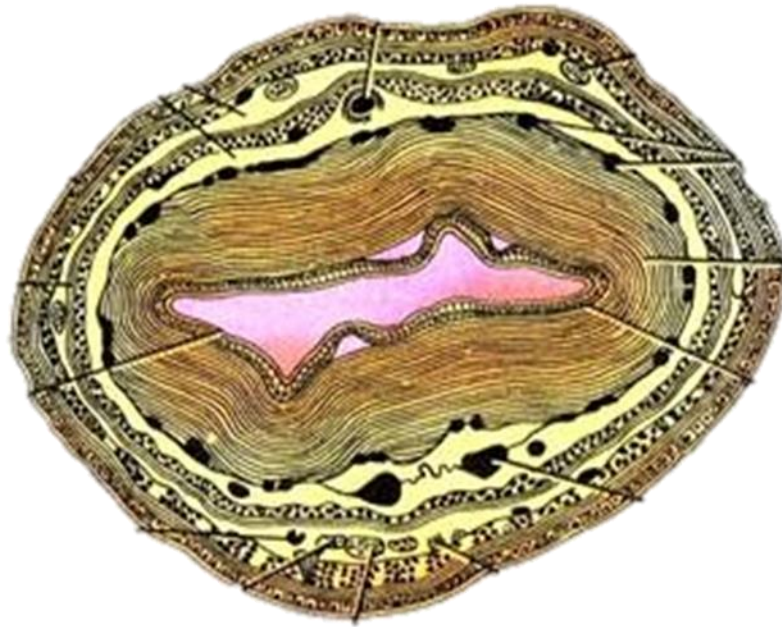
Spot no-3



Spot no. 4



Spot no. 5



Spot no. 6



Spot no. 7



Spot no. 8

